

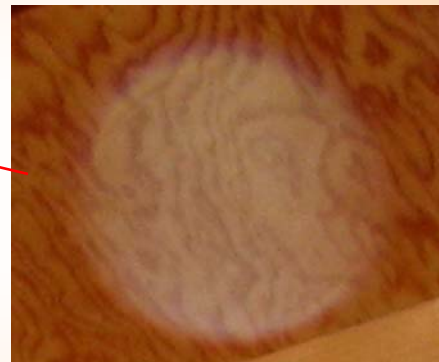
*Visit our Web site at: <http://edparanormal.com>*

Volume 3

November, 2007

## More Orbs Photographed in El Dorado County

The 4-H Historical Mapping Project did paranormal investigations at three locations in El Dorado County in October. The EDC Chamber of Commerce building on Main Street in Placerville did not disappoint the young investigators. The Gauss Meter, (detects magnetic energy known to be present with a paranormal event), indicated magnetic energy that was off the chart on many occasions during the investigation. Here are pictures of one of the orbs that was photographed on the first floor of the building said to be the place where many of Old Hangtown's outlaws were hung in the early day of the Gold Rush.



This orb was photographed in an office on the first floor of the Chamber of Commerce where all investigators felt an atmospheric change in the room.

To review the entire Investigation report from the Chamber of Commerce building, go to our website at <http://edparanormal> , and then go to the Paranormal Investigations link on the Web Menu. Click on Haunted El Dorado County to check out reports from other investigations listed there, as well. You can also read more about our investigation on page 5 of this newsletter.

**Don't forget to visit the El Dorado Paranormal Investigations web site at <http://edparanormal.com>. Newest addition to the site is: What Is It? –a page where people can send in photographs they can't explain. Christine will look them over, give her opinion as to what the anomalies are, and ask others to send in their opinions. Also look for special Announcements at the top of the Web Menu on the Home Page in the next few weeks.**

### Paranormal Quotes

*The truth is out there . . .*



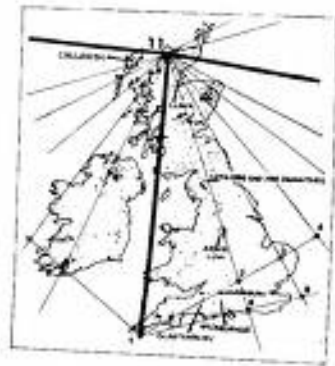
"I haven't had any experience with UFO's, but paranormal life seems to be all around me...I grew up on the lower east side of New York."

*-- David Duchovny*

# What are Ley Lines?

Ley lines are claimed by some to mark the path along which energy flows ('energy lines'), while others believe they are just alignments of significant points that marked tracks across otherwise uncharted territory. The word 'ley' itself refers to the line and so, although these have become known as 'ley lines', they should more properly be called just 'leys'. The word "ley" is also a Saxon word meaning "cleared strip of ground" or "meadow".

Simply put leys map sites of ceremonial and cultural interest aligned along straight lines that stretch for dozens some say even hundreds of miles. These straight line networks can be found throughout the world and in some cases incorporate elaborate spoke circles that include line systems within line systems.



One of the problems I can see with ley line maps is that they often don't agree on where the leys are. Both of these maps show leys running through Great Britain, but the leys don't appear to line up on both maps.

So, who maps leys? And how do they do it? Check out this Web site for more modern information:

<http://www.leyhunter.com/begin/index.htm>

The term "ley lines" was coined by Alfred Watkins when explaining his theory that ancient sites around Britain had actually been constructed or formed giving alignments between and across the inhabited landscape of Britain. The sites mentioned include Stone Circles, Standing Stones, Long Barrows, Cairns, Burial Mounds and Churches. A detailed exposition of his ideas on leys and landscape alignments can be found in "The Old Straight Track" by Alfred Watkins.

## **The Nasca lines.**

In a great many cases the evidence of ley lines is only apparent when charting them on a map. However, full visual evidence for ancient line networks is nowhere more obvious than the desert markings of Nasca in Peru. Here in the arid dry desert hundreds of line networks have baffled investigators for years. The markings, which are scratched on the desert surface are said to be thousands of years old. They stretch in perfectly straight lines, traversing desert ravines and gullies for distances of up to 60 miles. At first they were explained as calendrical markers, or vast astronomical directories. However, no satisfactory explanation has yet accounted for this mystery. Other line systems were found to radiate on the Inca capital, Cusco, with a focus on the Temple of the Sun. This was discovered through the use of infra red photography that revealed the true extent of this incredible enigma.



# The Bermuda Triangle



The "*Bermuda or Devil's Triangle*" is an imaginary area located off the southeastern Atlantic coast of the United States, which is noted for a high incidence of unexplained losses of ships, small boats, and aircraft.

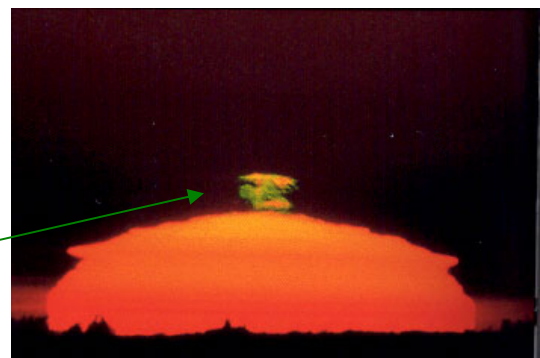
Christopher Columbus was the first person to document something strange in the Triangle, reporting that he and his crew observed "strange dancing lights on the horizon", flames in the sky, and at another point he wrote in his log about bizarre compass bearings in the area.



The *Bermuda Triangle* legend really began in earnest on December 5, 1945. At about 2:10 p.m., Flight 19, consisting of five TBM Avenger Torpedo Bombers left from the U. S. Naval Air Station, Fort Lauderdale, Florida, on an authorized navigational training flight. A radio message intercepted at about 4 p.m. was the first indication that Flight 19 was lost. This message, believed to be between the leader on Flight 19 and another pilot in the same flight, indicated that the instructor was uncertain of his position and the direction of the Florida coast. The aircraft pilots also reported experiencing malfunction of their compasses. Attempts to establish communications on the training frequency were unsatisfactory due to interference from Cuba broadcasting stations, static, and atmospheric conditions. All radio contact was lost before the exact nature of the trouble or the location of the flight could be determined. Indications are that the flight became lost somewhere east of the Florida peninsula and was unable to determine a course to return to their base. The flight was never heard from again and no trace of the planes was ever found even though an extensive search operation was conducted until the evening of 10 December 1945, when weather conditions deteriorated to the point where further efforts became unduly hazardous.

A PBM patrol plane was launched at approximately 7:30 p.m., 5 December 1945, to search for the missing TBM's. This aircraft was never seen nor heard from after take-off. Based upon a report from a merchant ship off Fort Lauderdale which sighted a "burst of flame, apparently an explosion, and passed through on oil slick at a time and place which matched the presumed location of the PBM, it is believed this aircraft exploded at sea and sank. No trace of that plane or its crew was ever found.

In the passed hundred years, more than 50 boats and 20 airplanes have mysteriously disappeared. It is unknown what has happened to them. Numerous planes and ships have vanished within the Triangle without a trace, often in good weather or near a landing site or port. Just before disappearing, crews have made radio contact indicating that nothing was amiss. In rare instances missing ships have been found, but without their crew or passengers.

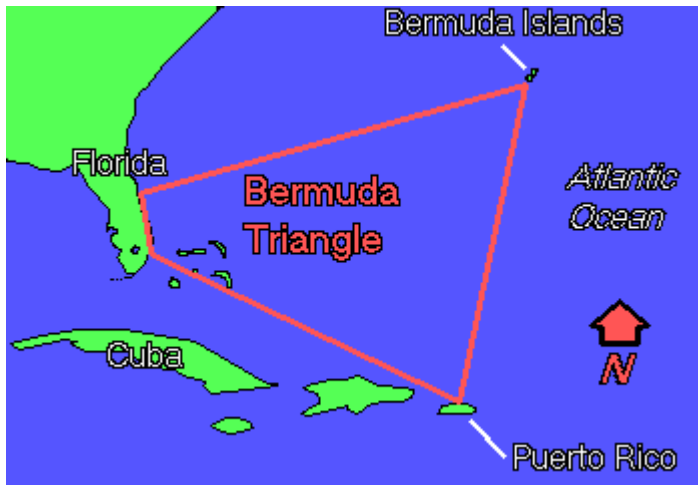


The "*Green Flash*," a rare phenomena seen most frequently in the area of the Bermuda Triangle. It is the reflection of light off of *something* that is otherwise invisible in the atmosphere. Whatever this invisible element might be, it is only visible at certain moments when the rays of the setting sun reflect off of it. The green flash has also been observed off the coast of the Western United States.

variation. The amount of variation changes by as much as 20 degrees as one circumnavigates the earth. If this compass variation or error is not compensated for, a navigator could find himself far off course and in deep trouble. Interesting though, that many paranormal events

For an interesting look at the type of ships and planes that have gone missing within the Bermuda Triangle check out these web links: (Copy and paste the addresses into your browser)

[http://www.bermuda-triangle.org/html/lost\\_ships.html](http://www.bermuda-triangle.org/html/lost_ships.html)  
[http://www.bermuda-triangle.org/html/lost\\_aircraft.html](http://www.bermuda-triangle.org/html/lost_aircraft.html)



Hundreds of books and articles have been published about the mystery of the Bermuda Triangle. There have been dozens of explanations for the mysterious disappearances that have taken place in this area of the Atlantic Ocean. No documented theory has proven conclusively any conjecture offered, however. It remains one of the unexplained.

### Paranormal Investigation Equipment-The Gauss Meter

The Gauss Master is a hand-held detector that offers an easy to read gauge and unique built-in audio signal. It is a great way to pick up electronic and magnetic fields. The theory is that when ghosts or spirits are present, they disrupt the electromagnetic fields. The Gauss Master will detect these disruptions.

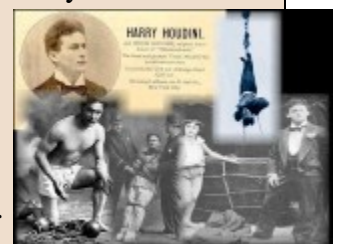
It must be used carefully, as the meter will also pick up a reading from some electrical appliances and wiring. Used alone it is not a definitive indication of paranormal activity, but when used with other paranormal equipment, it is a good way to add credence to overall evidence of paranormal activity.



"Can he get back to you? He appears to have stepped away from his body."

### Did you know . . .

. . . that after studying the personal dossier of the British spymaster, William Melville, where The Great Harry Houdini's name is mentioned many times, it is believed that Houdini was actually a spy working for Scotland Yard. It seems that Mr. Melville was responsible for booking many of Houdini's European engagements. It is also a theory that pro-Spiritualists really murdered the great magician. To learn more about these theories, read "The Secret Life of Harry Houdini—The Making of America's First Super Hero," by William Kalush and Larry Soloman.



# Historical Mapping Project Finds More Paranormal Activity on Main Street



Residents of El Dorado County are surrounded by history. Placerville (old Hangtown), Coloma, Georgetown, and the countryside that lies in between were all areas of active Gold Rush communities. Along with the influx of men arriving to this area from across the country looking for gold came a great deal of energy and lawlessness—enough lawlessness to warrant **two** hanging trees. One hanging tree was located at the site of the Hangman’s Tree Tavern. The other hanging tree grew where the Chamber of Commerce building now stands. With all the executions that took place in Old Hangtown, it is no wonder that there have been so many reports of unusual activity in the buildings on Main Street.

On Saturday, October 20<sup>th</sup> the Historical Mapping Project group met at the Chamber of Commerce Building on Main Street in Placerville. Those present were in for quite an adventurous day! The first indication that our investigation would be successful was when our Gauss meter registered electromagnetic energy (between 9 and 10) on the front steps of the building before we even went inside. Electromagnetic energy is associated with paranormal activity. A Gauss meter registers that energy on a chart showing how much energy is in an area the meter is pointed at. The chart reads from .0 to 10, which is the highest amount of energy the meter is capable of reading. The meter repeatedly jumped to 10 on the front stairs of the building. Once inside on the first floor of the building the meter calmed down a bit, but was still registering readings in some locations that were higher than a 4. (.0-2 is a normal reading). As we all took pictures, and used our paranormal equipment to search for unusual activity, we were unaware that we were being watched. The orb in this photograph was hovering over the group while we were in the main area of the first floor. The area where the orb is floating is where there



was once a balcony. The building was used as a theatre in the 1920s. There have been many reports that one or two of those former thespians still believe the show must go on and continue to walk the corridors and look out the windows of the second floor of the building.

We also all felt atmospheric changes in an office that is located to the left of where this picture was taken. We were able to capture another orb in this room on one of our photographs. We were told by Jamie, the lady who works at the the Chamber on Saturdays, that this area of the office is where the original tree limb was located where they hung the outlaws in the 1800s. The Conference room on the second floor seemed to have the most activity. Not only did we get pictures of orbs and Gauss readings that went off the chart again, but the French door to the room locked one of our adult volunteers in after the others left it. The only way to lock the door without a key is from the inside, and she was no where near the door when it locked. The door cannot be locked before it is closed.

After all that excitement we walked down the street to the Placerville Hardware. We were delighted that one of the owners of the building, Deanna, gave us an hour and a half paranormal tour of the establishment. As Deanna took us to various areas in the building where unexplained events have occurred, she relayed all the mysterious activity that she and her employees have experienced in the store. One of those unexplained activities is that employee’s shoe laces are constantly untied by unseen hands. This happens so often that the more experienced employees no longer wear shoes with laces. When we left the store one of our youths noticed that her shoe laces were untied! Coincidence? There doesn’t seem to be many “coincidences” on Main Street in Placerville!



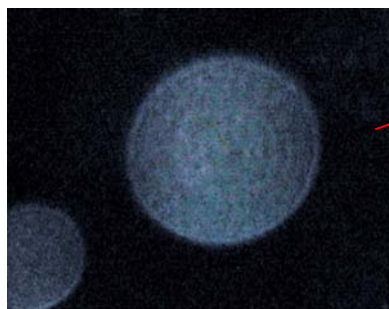
## Paranormal Fun in Santa Cruz A Night for Orbs!



On Saturday, October 27<sup>th</sup> Christine B. of El Dorado Paranormal Investigations was asked to be the guest speaker for a PT Cruiser Ghost Cruise sponsored by Dawn and Carol of the Monterey Bay PT Cruisers. Johnny Ellis and his wife Liz drove down from Oakley to join in the fun, as well. Johnny is a sensitive, and also an owner of a PT Cruiser, so between the two of us and all the other cruiser couples we had quite an adventure in Santa Cruz! Here are some photographs that ED PI took at The Trout Farm restaurant, The Roaring Camp Railroad, and the Evergreen Cemetery, which were all locations the cruisers visited that day and evening.



Both Johnny and Christine felt an atmospheric disturbance after entering the back room of The Trout Farm. The Gauss meter registered high readings near the back of the room, where the orb shows up in this photograph. After decorating the room, we all left to pick up the other cruisers. When we returned for dinner, the atmosphere felt normal again. None of the other photographs taken at this location showed any orbs, even though many others were taken of the same area. The lights might have caused a lens flare, but the flare would not be that high up in the photograph, considering where the wall lights are located.



This turned out to be a fun filled event—loaded with surprises!



A family of orbs is visible in this photo taken at the Evergreen Cemetery. Nothing to reflect back into the lens in this shot! It was pitch dark and pretty spooky!



The large orb in this photograph was taken at the Roaring Camp Railroad General Store. Photographs taken by others of the group also showed many orbs in this area, but not everyone who took photos captured orbs. No one expected to photograph anything paranormal at this location.



The most impressive evidence of this being a true orb is that the tree branches are in FRONT of the orb as it seems to be “resting” among them.