



PARAMORMAL MUSINGS NEWSLETTER



**by Christine B.*

Christine B. © 2009

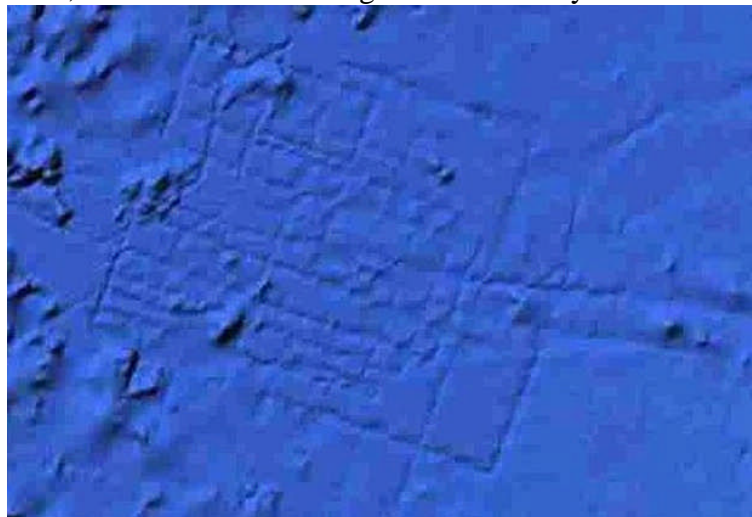
<http://edparanormal.com>

Volume 25

Paranormal News

September, 2009

In this age of satellite images, GPS units and Google Earth, no one should be surprised that some of our most intriguing mysteries will begin to be solved. It seems some investigators think they have discovered the location of Atlantis by using Google Earth. An article was published in the British Tabloid, The Sun (August 15, 2009) regarding reports of the discovery of a straight lined grid buried three and a half miles underwater. Since Mother Nature doesn't create straight lines, it is assumed that the grid was made by "human" hands.



These lines are located 620 miles west of Morocco near the Canary Islands, which is where Plato claimed the ancient island of Atlantis was located. The "grid" showed up on Google Ocean, a Google Earth extension that uses a combination of satellite images and marine surveys. To see more, here's the link to the Google site:

<http://maps.google.com/?ie=UTF8&t=h&ll=31.522361,-24.477539&spn=4.293184,5.916138&z=8>.

If not Atlantis, then perhaps it is evidence of roads from some other ancient civilization. Until a scientific research team investigates the location, it is all conjecture.

Bigfoot Crossing

On July 10, 2009, on a two lane roadway outside of Uniontown, in Fayette County, Pennsylvania a woman driving at 35-40 mph caught sight of a large figure approaching her from her left side. It was 6 pm in the evening and the night was warm and clear. She believed the large person would step in front of her car so she swerved to the right side of the road and stopped her vehicle. She then had an opportunity to get a good look at the creature and realized that it was not a person. When she looked in her rear view mirror she saw the being behind her car. "I saw it leap across my trunk." Shocked, she looked up to see the creature now on her right side running quickly down the middle of another road about 75 feet away. The entire incident had lasted just several seconds, but enough time for the witness to recall a detailed description of a creature which she was certain was not human, or a person in a costume.

Eric Altman, the Director of the (PBS) Pennsylvania Bigfoot Society, and a team of investigators went to the area to look into the event. There has been a long history of Bigfoot sightings being reported in this same general area of Fayette County.

Braxton Co. Residents Faint, Become Ill After Run-In With Weird 10-Foot Monster

Seven Braxton County residents Saturday reporting seeing a 10-foot Frankenstein-like monster in the hills above Flatwood.

They said they saw the monster Friday night when they climbed a wooded hill to investigate reports that a flying saucer had landed.

Mrs. Kathryn May, Flatwood, said she and six boys, including a 17-year-old member of the National Guard, started to search for a bright object which her two small sons said they had seen come down.

However, State Police laughed the reports off as hysteria. They said the so-called monster had grown from seven to 17 feet in 24 hours.

The National Guard member, Gene Lemon, was leading the

group when he said he saw what appeared to be a pair of bright eyes in a tree. At first he thought it was an opossum or a raccoon but when he shone his flashlight on it, he said, he saw a 10-foot monster with a blood-red face and a green body that seemed to glow.

Mrs. May said Lemon let out a terrified scream and fell over backwards. She said the monster started toward them with a bounding motion.

All of the party agreed that there was an overpowering smell that burned the nostrils and made them sick. Several of the party fainted and vomited for several hours after returning to town.

A. Lee Stewart, co-publisher of the Braxton County Democrat, said he and several men armed with

shotguns returned with Lemon about a half-hour to an hour later, and reported a sickening odor still present. He said there were also slight heat waves in the air.

"Those people were the most scared people I've ever seen," Stewart said. "People don't make up that kind of story that quickly."

Both Mrs. May and Lemon described the thing as having the shape of a man, blood-red face, bright green body, protruding eyes, and hand extended forward and appeared to give off an eerie light. They said it had a black shield affair in the shape of an ace of spades behind it and wore what looked like a pleated metallic shirt.

"It looked worse than Frankenstein," Mrs. May said.

On the afternoon of September 12, 1952 Sheriff Robert Carr and his Deputy Burnell Long received a call from witnesses who had seen a fiery object as it crashed into the earth near the Elk River, south of Gassaway, West Virginia. Shortly before nightfall, four boys playing football reported seeing an undefined object fall from the sky and onto a hill not far from their school playground.

The boys headed for the location where they thought the UFO landed. On their way they stopped at the house of Kathleen May. After listening to the boy's narration of what they had witnessed, Kathleen and her two sons joined their quest. When the amateur investigators reached the top of the hill, they experienced some unnerving events. Mrs. May reported that the night was foggy and the air had a metallic smell which burned their eyes.

The dog that was with them went on ahead, but soon returned to the group in a frightened state running back down the hill toward them with his tail between his legs. The group moved further up the hill and when they reached the top they reported seeing a "glowing, hissing" object about 10 feet in diameter, about 100 yards away. At this point it was completely dark, but the night was shattered by two lights, about a foot apart. One of the boys had a flashlight, and when he turned it on a creature ten foot tall appeared..."



Mrs. May and her rendition of what she had seen on the top of the hill near her home.

The being they saw had "a bright red face, bright green clothing, a head which resembled the ace of spades, and clothing which, from the waist down, hung in great folds".

When the creature began to "float" toward them, the group ran back down the hill to the May house. They called the Sheriff and reported what they had seen. Before the Sheriff arrived the boys called many of their friends and relayed what they had experienced. By the time Sheriff Carr arrived at the May house he was greeted by a small crowd of locals. One of the boys who witnessed the "Flatwood Monster" accompanied the sheriff back up the hill, along with the many onlookers. Although everyone present encountered the unusual metallic smell, when they got to the top of the hill, nothing else unusual was experienced. An investigation of the area the next day did produce the discovery of skid marks on the ground where something heavy had been.

Although the Sheriff attempted to explain away what the original investigators had seen, he couldn't put the episode to rest. Other residents of the area reported witnessing a "bright, orange" object circling over the Flatwoods area on the same night. A woman and her mother stated that they also had seen the tall creature, about eleven miles from the spot of the first sighting.



Although many investigations have been done of the area and the witnesses interviewed, no one has been able to explain what occurred in Flatwood. And no one has ever confessed to a hoax.

So many mysteries, so little time!

GHOSTLY RAILROAD CROSSING

What unseen hands are responsible for pushing cars over the railroad tracks on Shane Road near Cindy Sue Road? Although whoever is moving the cars cannot be seen, they do leave hand prints on the backs of cars. In the 1940s a train struck a school bus, killing the bus driver and ten children on board. Now, in order to protect others from suffering the same fate, any car that stops near the tracks is pushed to the other side. This phenomenon has been occurring for over 50 years and is still unexplained. Tiny hand prints can often be seen on the back of the cars that have been moved a safe distance from the tracks. Drivers stop their cars about 50 feet from the tracks, put their car into natural, and wait. They don't have to wait long before their car moves on its own to the other side of the tracks.



This photo has also been taken of the area where people from all over the country come to test the occurrence. Many people have experienced this phenomena and it has also been filmed by several television film crews, one of which was from the Unsolved Mysteries program. If you go to YouTube and copy and paste the title of this article into the search field, you'll be able to see many recordings of the unexplained occurrences. Here's one to start you off:

http://paranormal.about.com/od/hauntedplaces/youtube/yt_railroad_tracks.htm?nl=1

Christine's New Email Address: edparanormal@gmail.com





Who Are The Men in Black (MIB)?

No, I'm not referring to Tommy Lee Jones and Will Smith... I'm referring to the REAL Men in Black. The movies were funny, but in real life, not so much.

Many people who have reported UFO or alien encounters have also reported visits from men dressed in dark suits who claim to be government agents. Most reports from the people who have encountered these mysterious "men" usually also report that they have been threatened by them or that they made an effort to convince the witnesses that what they experienced never really occurred. The strange entities tell the people who have had alien encounters that they are not to tell anyone about the experience. Threats have ranged from personal and family bodily injury to anything revealed of their encounters would be considered treason against the country. I don't think there's anyone out there who would not believe that our government is capable of such threats... and that they would do almost anything to cover up any possible alien contact. But are these "dark agents" truly from a government agency? Some believe that the Men in Black are actually aliens themselves.

The phenomena first started occurring in the 1950's and 60's. In 1953 publisher Albert K. Bender, after claiming that he'd uncovered the secret behind flying saucers, reported that he couldn't reveal what he knew because he had been threatened by three men who wore black suits and hats. When Bender first made this claim he indicated that the threatening individuals were government agents. In later years, however, he changed his story and leaned more toward the encounter between them as being supernatural.

The people who have described their encounters with the MIB mention that the mysterious men seemed confused by the nature of everyday items such as pens, eating utensils or food, as well as them using outdated slang, as if they were from another time period. The abductees also report that these individuals often had unrecognizable devices that were capable of erasing their memories of the supernatural event. (Sounds remarkably like the movies, doesn't it?) This probably is what gave rise to the theory that they are aliens, as that sort of device has not been invented yet, as far as we know.

So, here's a plan... the next time one of you has an unexplained encounter from aliens, and you are visited by sinister men-like creatures who try to convince you that your experience is a figment of your imagination, take some photos of these guys so they can be examined more closely. Why hasn't anyone thought of *that* before???



What is Numerology?

Numerology Chart								
1	2	3	4	5	6	7	8	9
A	B	C	D	E	F	G	H	I
J	K	L	M	N	O	P	Q	R
S	T	U	V	W	X	Y	Z	

Numerology is a science of using numbers to determine a person's personality. Numerology has been used for over 2,500 years. It is believed that we all come to earth with a plan from God. Your birth and name were no accident and that it is what you chose to experience and learn *before* you were conceived.

This is the 26 letter alphabet table. Use this Numerology Chart to find your **Expressions Number**. **Here's how to do it:**

1. Add up all the numbers that correspond with your name. You can use up to 4 names. I choose to use only my first name, since that is the only part of my name that I was born with and have kept my entire life. (i.e.: Christine would be:
 $C=3+H=8+R=9+I=9+S=1+T=2+I=9+N=5+E=5 =51 \quad 5+1=6$)

To find your **Life Path Number** and the number associated with your character you should:

1. Add all the numbers of your birth date using all the numbers of your birth date. (i.e.: 10/16/1948 would be $1+0+1+6+1+9+4+8= 30$)
2. Now add those two numbers and that will give you your Life Path Number. (i.e.: $3+0=3$)
 So my numbers would be 3 & 6.

Do not reduce 11 and 22, which are master numbers

Okay, now use the Chart to determine your personality and your compatibility with others

Personality and Compatibility Chart	
ONES	Compatible with: 1,2,3,5,7,9
	Independent, self-motivated, hard workers, strong desire to be #1, critical of themselves, thus can be critical of others.
TWOS	Compatible with: 2,3,4,6,8,9
	Natural mediators, when cornered they can become "terrible 2s." They seek love and peace. They don't like being alone.
THREES	Compatible with: 1,2,3,6,9
	Communicators, writers, radio broadcasters, actors, singers, performers, counselors. They are natural comedians. They can become manic-depressive if they don't use creative energy. They tend to exaggerate and are known by their trademark smile, eyes and voice. (Wow! I am an author and had my own radio program—and I'm very funny!)
FOURS	Compatible with: 2,4,5,7,8
	They like security and their home is their Heaven. Very cerebral and must activate the great ideas that can't live and die in their heads. They are gardeners and journal keepers. They have to learn to "Just Do It!"
FIVES	Compatible with: 1,3,5,7 and sometimes 8
	Freedom, fun and adventure. Without adventure their lives become soap operas. Natural detectives and celebrators of life. Have difficulty settling down and fear being trapped.

SIXES	Compatible with: 2,3, 6, 8, 9 Nurturers. If men, rescues ladies in distress. If woman, they mother the “little boy” in their men. If things are going well, they are tempted to sabotage it. They tend to put people on pedestals. Sixes often run the company. People are drawn to them. Their moods can affect the entire room they are in. They are also very creative. <i>(Right on for me, once again!)</i>
SEVENS	Compatible with: 1,4,5,7 Cerebral loners. Love natural beauty, ocean, green grass, flowers, etc. Needs to learn to have faith, Without faith they become cynical and escape through drugs, alcohol, work and geography. They have an air of mystery and don't want you to know exactly who they are.
EIGHTS	Compatible with: 2,4,6,8 and sometimes 5 Here to master money. They learn the hard way and don't take advice well. They have to hit their heads before they learn. They appreciate quality things in life. So focused on work they forget to acknowledge the people they're working so hard for. Forget to say “I love you” to their mother, child, or spouse. They enjoy material things and need to watch their physical health.
NINES	Compatible with: 1,2,3,5,6,9 Natural leaders. People assume they're in charge. They take care of everyone else but need to learn they need help, love, and hugs. They often feel unloved or abandoned by their mothers or fathers and/or feel completely responsible for them. They have difficulty letting go of the past.



Some astrologers believe that each number from 0 to 9 is ruled by a celestial body in our solar system.

Zero is ruled by the planet **Pluto**, (even though it's no longer considered a planet) which gives it many transforming and regenerating qualities. It has a lot of depth and intensity, which makes it an abstruse number indeed.

One is ruled by the **Sun** and the astrological aspect of the conjunction,

Two is ruled by the **Moon** and the astrological aspect of the opposition. This number is associated with relationships in general.

Three is ruled by **Jupiter** and the astrological aspect of the trine, and is educated, wise, and happy. Money will come and go easily when three is significant.

Four is ruled by **Uranus**. It is very eccentric and unusual in nature. Where this number is prominent invention and ingenuity.

Five is ruled by the planet **Mercury** and the astrological aspect of the quincunx. It is very communicative and witty on a light level.

Six is ruled by the planet **Venus**. It is a pleasant, harmonious number that governs the arts and music. Tact and diplomacy figure prominently with this number.

Seven is ruled by the planet **Neptune**. It is a very spiritual number and is the number of mystics, visionaries, and seers. This number has many surreal, or unreal, qualities to it.

Eight is ruled by the planet **Saturn**. It is a solid and very stable number that has many limitations that must be transcended.

Nine is ruled by the planet **Mars** and the astrological aspect of the square. It is forceful and dominating in an attempt to control the tension that is inherent in this number. It also has a great

deal of stability and is therefore a good number when attempting to build foundations.

Recurring and Repeating Numbers in Numerology

Often there are reoccurring numbers that keep popping up in our lives. There is a reason for this as the "Universe" is trying to tell you something...

From: http://www.decoz.com/numerology_tutor_seeing-repeating-numbers.htm

11, 11/11, 2.11, 11.2, etc.

With the number 11 the issue is always one of subtlety, intuition, sensitivity, awareness, and the presence of knowledge that is not being applied. You need to trust your intuition. Your gut feelings tend to be more reliable than your "rational" understanding. You are making the wrong decisions based on what you think you know, while deep down your intuitive understanding is telling you to go a different direction.

Very often, people experience this number pattern in the early stages of a relationship, and in that context, it should be considered a warning. Take it very slow. Be very careful. Don't stick your head in the sand when you realize something within the relationship is not quite right. Chances are, it isn't. This does not mean that just because you see the number 11 appear everywhere; you should get out of the relationship. But it does mean that there are certain things you should be aware of. Actually, I should say you are, deep within, aware of them, but you need to make the next step and consciously acknowledge what you already know on a subconscious level.

When romance is not part of the picture, this number can point at just about anything else. Perhaps there are things happening in your work environment you have not paid attention to, although your feelings have been trying to tell you something.

In short, you have to take a close look at your life and "read between the lines." Your inner self is attempting to communicate with you and you are not listening. Open up and acknowledge what you know. Trust thyself.

22, 22.4, 4.22, 22/22, etc. *(Once again—my numbers)*

The 22 almost always deals with the productive part of your life; your job, your responsibilities, your creativity.

You are either ignoring opportunities, or you are afraid of the potential results - even if they are promising (or precisely *because* they are promising). You are quite possibly at a stage in your life when the door is open to a promised land. Very scary. Can you handle it?

The great Russian master Gurdjev, talks about "extra effort." This is the secret to success on all levels of life; material, spiritual, emotional. In a nutshell, the explanation is this. People who do not put forth effort end up losing every opportunity and every chance of real happiness. They are the losers among us. Poor, unhappy, and full of self-pity. Petty crime, jealousy, anger, cynicism, lost love, and blaming every one but themselves, is a loser's daily experience.

Those of us who understand the need for effort and live up to that, do fine. Perhaps not rich, perhaps not involved in the perfect relationship, perhaps not anywhere near as successful as we think we deserve to be, we nonetheless muddle on in relative peace and contentment. We have our friends, we have a job, we have opportunities.

(**This one is me in a nutshell!*) Then there are those who have it in their nature to apply extra effort to everything they do. They don't just do their jobs. They do it better than is required. They apply themselves completely to everything they do. They are perfectionists. They demand the most of themselves. And not just in their jobs. Their spiritual experiences also reflect this. They don't accept anything because it is easy, or convenient, or expected, or comfortable. They search and sacrifice. They question, and they put everything on the line for just one more little bit of understanding. They risk friendships and romance in the search for knowledge. On the emotional plane, they are hard and unforgiving to themselves, but compassionate and generous to others. They don't make excuses or try to shift the blame.

And, lo and behold, there is balance in all things; they reach happiness and contentment, an inner peace and visible spiritual strength that is recognized and admired by many. They win. They always reap their rewards.

If the 22 is found prominent within a number pattern that just keeps popping up in your life, it means you have it in you to become a person for whom the path of extra effort is the natural path. You just need to shift gears.

33, 33.6, 33/33, etc.

The number 33, in the context of repeating numbers, represents generosity, the act of giving. You have something to give, but you are holding on. The thing you have to offer is not material. It is knowledge, faith, wisdom, love, or one of the many other qualities of the heart and mind. Look around you. Look inside. What is it that you have to offer. Because something is asking you to surrender to the act of giving. And your happiness depends on it.

16, 16/16, 4/16, 416, etc.

The number 16 also is quite common, and is perhaps the one to be viewed most strongly as a warning. You are approaching a dangerous time in your life. Your perspective of yourself, of who you are, clashes with reality and the world you live in. You are misreading many of the signs. Your perspective is probably off by a dangerous margin. You need to take the time to step back and re-evaluate your life as open-minded and honest as possible. Start with the assumption that you are probably wrong on many fronts. Be self-critical. Be brutally honest with yourself.

If you can do it, you may want to consider taking some time off. Quiet time. But also talk to others. People you are close to and trust to be honest and straightforward with you. Let them have the opportunity to see your doubts and fears. Listen to what they have to say.

You need to get back on course, perhaps others can be your guiding stars.

Christine's New Email Address: edparanormal@gmail.com



A PURPOSEFUL LIFE

When I was young and didn't know
The mysteries that chose at times to
assault;
And couldn't wholly comprehend my
dreams
So merely stored them in memory's vault.

Then when I looked into a mirror
And saw another through the haze,
I couldn't know that I had stepped
Back in time to previous days.

When out of the corner of my eye
I gleamed a spirit lurking there,
I thought that others saw him too
And never felt the slightest fear.

Now I'm grown and have come to know
That God has bestowed a special gift;
And I am ever purpose driven
To let all know what does exist.

Life is not a one-time stage
For we actors to strut and strive,
It is instead a learning tree
With many branches to delve, not hide.

Open yourself to what may inspire
You to live a purposeful life;
And learn what mysteries there are to
solve
Instead of dwelling on everyday strife.

For it won't be the toys you have acquired
That will lead you eventually to Heaven's
door,
But rather knowledge and others inspired
That will raise to heights your soul to soar.

Christine B. © 2009

CELTIC MESSAGES JOULES TAYLOR'S AFFIRMATION AND DEVIATION CARDS

The 52 Round Celtic Messages cards are a new form of tarot reading. The cards represent the sacred symbols for everyday living.

The cards symbolize the four main aspects of Celtic culture - Places, Helpers, Tools and Totems. Each card not only contains an image but several keywords that can be used as affirmations.



Place cards symbolize where you are or where you ought to be. This can be a spiritual or emotional place as much as a physical location.

Examples include The Hillfort, The Ford, and The Sacred Grove.

Helper cards symbolize people and their personal qualities. Depending on your reason for looking to the cards, this can mean someone who can help you, or the sort of help you need to offer another.

Examples include Boudicca, Morrigan, and The Druid.

Tool cards symbolize forces outside yourself, actions you need to take, or tools – physical, mental or spiritual – you need to use, to accomplish your aims.

Examples include The Dagger, The Cauldron, and The Harp.

Totem cards are all animals sacred to the Celts. They symbolize the qualities you need to draw on from deep within yourself in order to resolve the problems facing you, achieve your goals, or take the next step in your journey through life.

These seem to be a more friendly form of tarot reading than the traditional tarot decks. No “Tower” of destruction card in this deck.

***Christine B.** writes about subjects most people don't normally enjoy thinking about, yet ponder, just the same. Presenting a "what if" slant in her poetry, short stories and novels, her works suggest alternative answers to some of life's most intriguing questions, while guiding readers off the beaten path into paranormally "Dangerous Terrain." Christine owns El Dorado Paranormal Investigations. She creates a monthly newsletter, "Paranormal Musings," which delves into paranormal subjects and educates the public that "Paranormal is Normal." Her novels include: "The Afterlife of Charlotte Browning" (won Best General Fiction and Best Media Package of 2008 from the Northern California Publishers and Authors); "From the Stones-A Colleen Broadhurst Adventure;" and "The Coming 12/21/2012". She is also working on a non-fiction book about her own paranormal experiences and those of others. Christine can be reached via her web site: <http://edparanormal.com>, which has been named one of the most informative paranormal sites on the web. Email her at edparanormal@comcast.net.

FAN MAIL

Hi Christine ~ I checked out your website and I think you're doing a great job. I'm one of those people who feels like the 'paranormal is normal', if that makes any sense. But I haven't pursued it beyond that because of time constraints. . . . thanks again for being who you are. I'm sure sooner or later I'll be talking and learning from youagain.

John Victor Crocker, Ohio

Cryptozoology is the study of animals which have not been proven to be real, such as the Bigfoot, Loch Ness Monster, Mermaids, Fairies, Yowies, the Chupacabra, the Mothman, Thunderbirds, etc., and includes a few animals that have now been proven to exist, such as Gorillas, Giant Squids, Manatees, and Dinosaurs (Dragons). Did you know that up until the mid 1800's Gorillas were considered mythical? Some scientists believe that Manatees are the creatures sailors mistook for the mythical mermaid...

Are they kidding?

Believe that this

to mermaids?



Yeah, right.



Can anyone really creature compares



Most scientists agree that there are thousands of unknown animals, particularly invertebrates. The fact that so many people have reported first hand sightings of Nessie, Bigfoot, Fairies, the Mothman, etc. leads one to believe that it is at least possible that they really do exist and that it's merely a matter of time before they too are removed from the "mythical" list and added to the list of "known species." The more something is researched and studied, the more likely it is to be understood. Cryptozoology is the first step to discovery.

LISTEN TO GHOSTRIDER INGESTIONS BLOK TALK RADIO!

With Host, Jon Almada

GRI conducts investigations based on scientific method and investigation techniques. On our show, we discuss local haunts, cases we've been fortunate to be on and often feature other groups who have much to teach and share from their wealth of experience. Our goal is to bring science and even a bit of enjoyment (code word for FUN!) to our investigations. Part of the process of exploring the paranormal and the spirit world is to learn a bit of the history and reason *why* we see paranormal events at various locations. We teach history as well as science in our frequent field missions.

Join us weekly as we feature guests from all over the United States! Christine B. will occasionally be a guest host on this program.

Visit us at <http://www.blogtalkradio.com/ghost rider> for our Friday shows at 8:00pm Pacific weekly

FAMOUS HAUNTED PLACES



The Chase Vault—The Restless Coffins of Barbados

One of the most infamous paranormal events has been taking place at the Christ Church Parish Church cemetery on the Island of Barbados for over 200 years. The crypt was constructed by the Waldrons, a wealthy sugar plantation family. It was constructed out of the coral that is found off the island's coast.

The crypt's first occupant was Mrs. Thomasina Goddard on July 31st, 1807. She was buried in a wooden coffin; a large marble slab was used to seal off the entrance. Soon afterward ownership of the crypt passed to the Chases, another wealthy plantation family.

Mary Anna Maria Chase died at age 2 and was interred on February 22nd 1808 in a leaden coffin. Dorcas Chase, her older sister, followed on July 6th 1812, also in a leaden coffin. A month later their father, Colonel Chase himself died. He was buried in the vault on August 9th in a wooden coffin placed inside a leaden one.

The eight pallbearers who carried Colonel Chase's coffin down into the vault were the first to notice that the two leaden coffins already in the tomb were not where they had been left a month earlier. Mary Anna's coffin was laying upside-down in the opposite corner from where it had been placed. The workers returned the coffins to their side-by-side positions and left that of Colonel Chase next to them. The smaller coffin of Mary Anna was placed on top of one of the larger ones. The crypt was resealed with its heavy marble door. The crypt remained undisturbed for four more years.

Master Samuel Brewster Ames, a young Chase relative aged 11 months, was the next Chase to be buried within the crypt on September 25th 1816. When the new casket was brought to the crypt and the door was unsealed, once again the funeral attendees noticed that the caskets of the other family members were rearranged. Before leaving the tomb, the caskets were once again placed back to where they had originally been. On November 17th, the coffin of another Chase relative, Samuel Brewster was removed from its original resting place and brought to the Chase crypt. This time the local magistrate accompanied the funeral guests when they unsealed the door.

Everyone present were shocked when the door was opened and they saw that the coffins had been moved around so violently that Mrs. Goddard's wooden coffin had been almost totally destroyed. The magistrate ordered the vault thoroughly inspected for cracks in the walls, floor, ceiling, or hidden entrances, but the structure proved solid with no breaches to its integrity.

The mourners bundled the splintered pieces of Mrs. Goddard's coffin together and placed them between Samuel Brewster's coffin and the wall. The rest of the coffins were reorganized and the door sealed again, this time with mortar.

In July of 1819 the casket of Miss Thomasina Clarke was brought to the vault. By this time the news of the bizarre events that had been taking place at the Chase tomb had spread all over the island and beyond. The Governor of Barbados, Sir Stapleton Cotton joined the mourners at the crypt when the door was unsealed to witness the strange phenomenon. He was joined by throngs of curious others. The mortar was broken and the slab was removed from the door of the crypt, and the onlookers peered inside the crypt to see it once again in a disheveled state. Colonel Chase's coffin lay near the entrance; the children's coffins were now on the floor, but Mrs. Goddard's decaying coffin was still neatly bundled where it had been placed the last time anyone had been there.

On April 18th, 1820, a group of Barbados officials accompanied by hundreds of other locals met at the crypt to investigate what they would find. A thorough inspection of the Vault was ordered of the outside of the crypt and was found to be as strong and undisturbed. The mortar seal was examined and was intact and untouched. The mortar was again chipped away and the heavy marble door slab removed from the entrance of the tomb.

A coarse, grating sound came from within the crypt. When the crypt was entered the crowd was shocked by what they saw. The coffin containing the body of Dorcas Chase, dead for eight years, was out of her coffin and leaning against the door. The small coffin of Mary Anna Maria Chase, inside the tomb for 12 years, had been flung violently against the left side wall. The rest of the coffins had been disturbed in a similarly chaotic manner. The sand covering the floor had no footprints or any other evidence that anyone had been inside.



The Chase Vault was immediately emptied and its occupants given separate burials elsewhere in the cemetery. Today it sits empty and has become a place of continued interest to tourists.

<http://edparanormal.com>

edparanormal@gmail.com **NEW EMAIL ADDRESS!!!**



<http://profile.myspace.com/index.cfm?fuseaction=user.viewprofile&friendid=65519496>

Facebook: <http://www.facebook.com/home.php#/profile.php?id=1451195089&ref=profile>
(This is the site I use most often, so feel free to add yourself to my friends list!)

http://www.supernaturalconnections.com/Christine_B

<http://edparanormal.ning.com/>

Flicker-Photos:

<http://www.flickr.com/photos/christineb777/>

My Hub Pages:

<http://hubpages.com/profile/Christine+B>

KNIGHTWATCH:

<http://knightwatch.ning.com/profile/ChristineB>

The Photography Network: <http://www.picturesocial.com/profile/ChristineB>